

EZ Mount 1

MEDIUM to HEAVY
CAPACITY MOUNT
ASSEMBLY



RICE LAKE[®]
WEIGHING SYSTEMS

To be the best by every measure[®]

800-472-6703

www.ricelake.com
m.ricelake.com

EZ Mount 1 MEDIUM to HEAVY CAPACITY MOUNT ASSEMBLY

The EZ Mount 1 Series weigh module is designed to provide superior performance in a wide range of process control and vessel weighing applications including batching, blending and bulk inventory management. Each assembly features a temperature-compensating and self-checking sliding pin design, making it ideal for indoor or outdoor applications.

The EZ Mount 1 is easy to install and can be bolted directly to the vessel and foundation. It is available with mild steel or stainless steel construction in capacities from 5000 lbs to 250,000 lbs.

For a complete solution, kits that include load cells, mounting assemblies, a junction box and cable are available. To complete your system, Rice Lake Weighing Systems also offers digital indicators and controllers for setpoint filling, batching and unloading.

Standard Features:

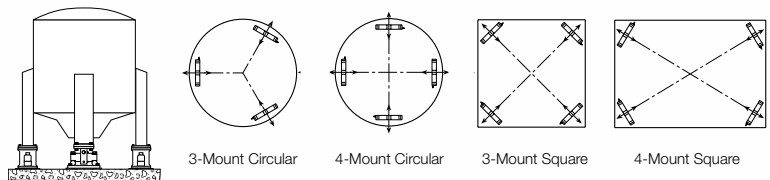
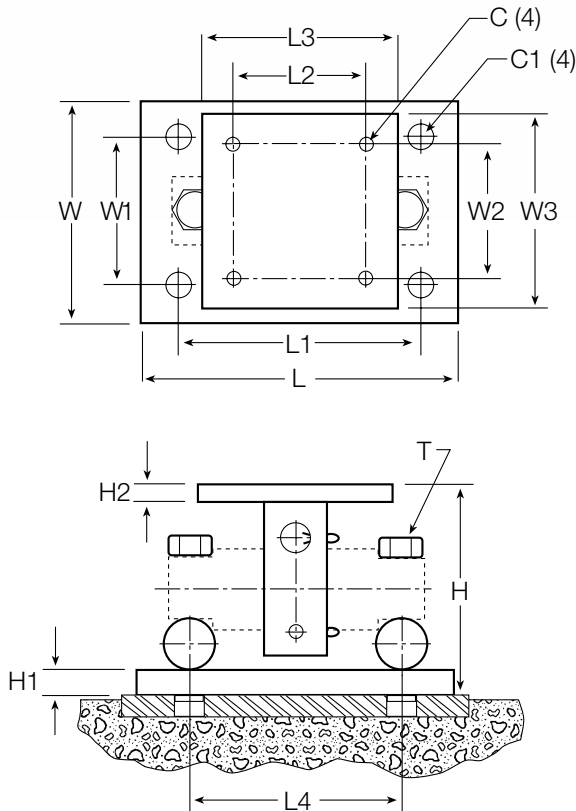
- Capacities per assembly: 5000 lb - 250,000 lb
- RL70000 NTEP-certified, FM approved load cells in capacities from 5000 lb to 200,000 lb for enhanced performance
- Unique sliding pin design compensates for thermal expansion/contraction
- Self-checking in all directions, including lift-off protection, eliminates external hardware
- Easy load cell removal minimizes maintenance costs
- Low profile, bolt-in-place design allows mounting directly to tank and floor
- Two-part epoxy-painted mild steel construction stands up to a variety of environments

Options:

- Stainless steel construction
- RL70000SS stainless steel, FM approved load cell
- RL71000HE stainless steel, FM approved, hermetically-sealed load cell (5000-60,000 lb)
- Revere Transducers Inc. 5103 tool steel load cell
- Revere Transducers Inc. 9103 stainless steel load cell



Capacities/Dimensions:



Vertical & Horizontal Vessel Arrangements

	5000 lb - 20,000 lb	30,000 lb - 60,000 lb	100,000 lb	150,000 lb	200,000 lb - 250,000 lb
	inches/mm	inches/mm	inches/mm	inches/mm	inches/mm
C	.56/14.3	.68/17.3	.81/20.6	.81/20.6	1.06/26.9
C1	1.06/26.9	1.19/30.2	1.38/35.1	1.38/35.1	1.88/47.6
H	5.31/134.97	8.43/214.1	10.37/263.4	10.37/263.4	16.75/425.5
H1	.75/19.1	1.00/25.49	1.25/31.8	1.25/31.8	2.00/50.8
H2	.50/12.7	.75/19.1	1.25/31.8	1.25/31.8	2.00/50.8
L	11.00/279.4	15.00/381.00	18.00/457.2	18.00/457.2	260.00/660.4
L1	8.00/203.2	11.50/292.1	14.00/355.6	14.00/355.6	20.00/508.0
L2	3.00/76.2	5.12/130.0	7.50/190.5	7.50/190.5	9.00/228.6
L3	6.00/152.4	8.00/203.2	10.00/254.0	10.00/254.0	12.00/304.8
L4	6.87/174.5	8.50/215.9	9.50/241.3	9.50/241.3	13.00/330.2
T	5/8-18 UNF	1-14 UNS	1-14 UNS	1-14 UNS	1 1/2-12 UNS
W	7.50/190.5	10.00/254.00	12.00/304.8	12.00/304.8	12.00/304.8
W1	4.00/101.6	6.00/152.4	9.00/228.6	9.00/228.6	6.00/152.4
W2	3.00/76.2	5.12/130.1	7.50/190.5	7.50/190.5	9.00/228.6
W3	6.00/152.4	8.00/203.2	10.00/254.0	10.00/254.0	12.00/304.8

Your Rice Lake Weighing Systems distributor is:

RICE LAKE
WEIGHING SYSTEMS
To be the best by every measure®

230 W. Coleman St. • Rice Lake, WI 54868 • USA
TEL: 715-234-9171 • FAX: 715-234-6967 • www.ricelake.com

An ISO Registered Company © 2012 Rice Lake Weighing Systems PN 22118 5/12
Specifications subject to change without notice.