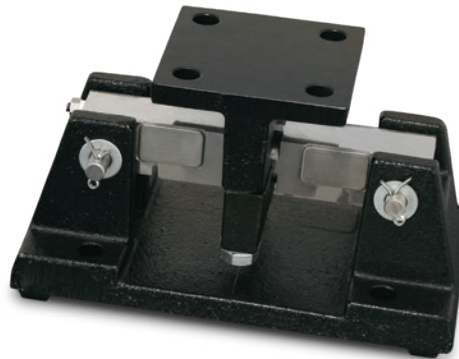


# RL1600 Series

Cast Iron Weigh Modules



Cast iron module with RL75016 double-ended beam load cell



Picture is a representation of actual product.

## Complete Kit Includes

- One JB4SS NEMA Type 4X stainless steel signal trim junction box
- Three or four RL1600 cast iron compression mounts
- Three or four RL75016 double-ended shear beam load cells
- 25 ft of hostile environment EL147HE SURVIVOR® load cell cable

## Standard Features

- Capacities (per module): 1,000 to 25,000 lb
- Cast iron construction
- Self-checking easy-to-use design allows module to be bolted directly to tank leg without requiring additional mounting plates or load buttons
- Environmentally protected load cells
- Double-ended beam design, center loaded

## Optional Features

- Kits available with VPG® Sensortronics 65016 load cells, capacities (per module): 1,000 to 25,000 lb

## Applications

- Medium- to heavy-capacity tanks, bins and hoppers
- Bulk material management

## Order Information

Load Rating (Per Module)	Part #	Price
<b>Single Module (Does NOT Include Load Cell)</b>		
1,000 lb to 5,000 lb	<b>17964</b>	Consult
10,000 lb to 25,000 lb	<b>17965</b>	Consult
<b>3-Module Kit</b>		
1,000 lb	<b>25663</b>	Consult
1,500 lb	<b>25664</b>	Consult
2,000 lb	<b>25665</b>	Consult
2,500 lb	<b>25666</b>	Consult
3,000 lb	<b>25667</b>	Consult
5,000 lb	<b>25668</b>	Consult
10,000 lb	<b>25669</b>	Consult
15,000 lb	<b>25671</b>	Consult
20,000 lb	<b>25672</b>	Consult
25,000 lb	<b>25674</b>	Consult
<b>4-Module Kit</b>		
1,000 lb	<b>25675</b>	Consult
1,500 lb	<b>25676</b>	Consult
2,000 lb	<b>25677</b>	Consult
2,500 lb	<b>25678</b>	Consult
3,000 lb	<b>25679</b>	Consult
5,000 lb	<b>25680</b>	Consult
10,000 lb	<b>25681</b>	Consult
15,000 lb	<b>25682</b>	Consult
20,000 lb	<b>25683</b>	Consult
25,000 lb	<b>25684</b>	Consult

## VPG Sensortronics 65016 Order Information

Load Rating (Per Module)	Part #	Price
<b>3-Module Kit</b>		
1,000 lb	<b>25685</b>	Consult
1,500 lb	<b>25686</b>	Consult
2,500 lb	<b>25688</b>	Consult
5,000 lb	<b>25690</b>	Consult
10,000 lb	<b>25691</b>	Consult
15,000 lb	<b>25692</b>	Consult
20,000 lb	<b>25693</b>	Consult
25,000 lb	<b>25694</b>	Consult
<b>4-Module Kit</b>		
1,000 lb	<b>25695</b>	Consult
1,500 lb	<b>25696</b>	Consult
2,500 lb	<b>25698</b>	Consult
5,000 lb	<b>25700</b>	Consult
10,000 lb	<b>25701</b>	Consult
15,000 lb	<b>25702</b>	Consult
20,000 lb	<b>25703</b>	Consult
25,000 lb	<b>25704</b>	Consult
<b>Dummy Load Cells</b>		
1,000 lb to 5,000 lb	<b>18236</b>	Consult
10,000 lb to 25,000 lb	<b>18237</b>	Consult

WEIGH MODULES

# RL1600 Series

Cast Iron Weigh Modules

## Load Cell Upgrade

RL75016SS Stainless Steel Load Cells
Three mount kits, 1,000 lb to 25,000 lb Consult added to list price
Four mount kits, 1,000 lb to 25,000 lb Consult added to list price
RL75016WHE Stainless Steel Hermetic Load Cells
Three mount kits 1,000 lb to 5,000 lb Consult, 10 k-25 k Consult added to list price
Four mount kits 1,000 lb to 5,000 lb Consult, 10 k-25 k Consult added to list price

Contact factory for a 50,000 lb to 75,000 lb upgrade

## Dimensions

Rated Capacity	C	H	H1	H2	L	L1	L2	L3	T	W	W1	W2	W3
lb/in													
1,000 to 5,000	0.56	5.00	0.50	0.50	9.31	2.75	4.00	6.25	1/2-13 UNC	5.00	3.75	2.75	4.00
10,000 to 25,000	0.78	7.89	0.75	0.75	12.00	6.00	8.00	7.50	3/4-10 UNC	8.00	6.00	6.00	8.00

## Shims, Mild Steel

	Part #	Price
<b>1,000 lb to 5,000 lb</b>		
0.0625 in	<b>150844</b>	Consult
0.125 in	<b>150845</b>	Consult
0.250 in	<b>150846</b>	Consult
<b>10,000 lb to 25,000 lb</b>		
0.0625 in	<b>150847</b>	Consult
0.125 in	<b>150848</b>	Consult
0.250 in	<b>150849</b>	Consult

WEIGH MODULES

