

# MotoWeigh® IMW

In-Motion Conveyor Scale and Checkweigher



## Approvals



Optional



Optional

## Standard Features

### Software

- Four levels of security
- Real-time statistical information
- Product report
- Statistical report
- Parameter report
- User report
- Store up to 1,000 different products
- Five-zone classification

### Control Panel

- 1280 controller
- Power disconnect with lock-out/tag-out
- E-stop
- VFD (variable frequency drive)
- Motor overloads

### Hardware

- Square tube construction (SST or aluminum)
- 32 in height from top of belt with  $\pm 2.5$  in of adjustment
- Modular belting

## Options

- Divert methods:
  - Pneumatic pusher
  - Air blast
  - Drop conveyor
  - Paddle
  - Secondary diverter in series or parallel
- One-, three- or five -zone communication tower
- Audible alarm (non-washdown only)
- Draft shields
- Drop chutes
- Pull cord E-stops
- Portability package (non-NTEP Certified only)
- Conveyor guide rails (round or flat)
- Custom programming available
- Food-grade SST angle construction, NEMA Type 4X IP66 washdown systems
- Meets HACCP requirements
- UL 508
- NTEP Certified Legal for Trade (up to 2,000 divisions and 60 ppm)
- Pacing conveyor

## Specifications

### Construction:

- Stainless steel food-grade
- Stainless steel non-food-grade
- Aluminum non-food-grade

### Configurations:

- Checkweigher
- Conveyor scale

### Speed:

Up to 240 ft per minute

### Container Types:

- Boxes, bags, pouches, trays, tubs, cups, blister packs, display packs, clam shells

### Belts:

Intralox® Habasit®

### Power Configuration:

- 110 VAC single phase, 60 Hz
- 230/460 VAC 3 phase, 60 Hz

### Warranty:

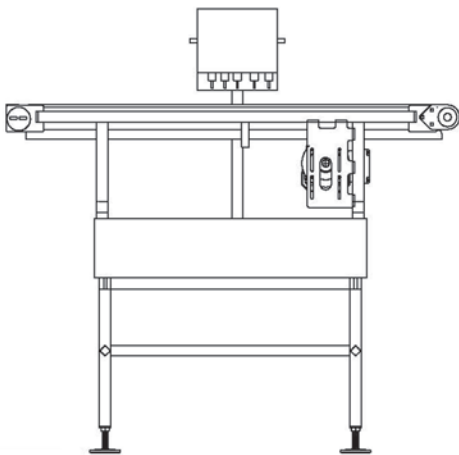
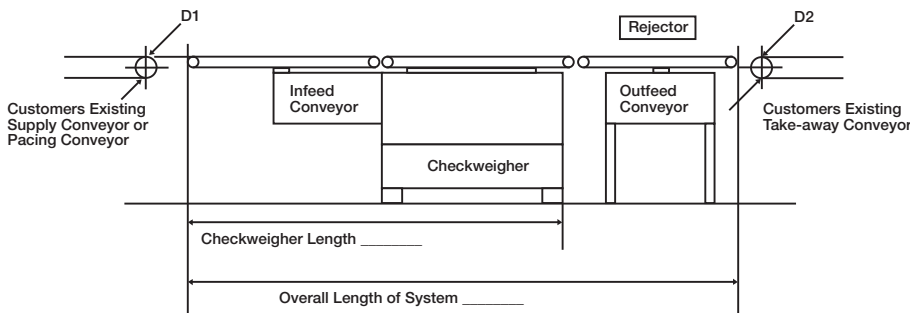
- Two-year limited (excludes powertrain and wear parts)

### Checkweigher Packages:

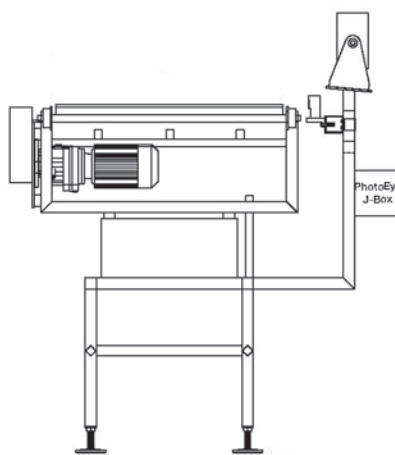
- NTEP Certified and non-NTEP Certified packages available in stainless steel and aluminum for food and non-food-grade applications

### Checkweigher Packages Include:

- Common framework for mounting conveyor scale on same frame as infeed conveyor and indicator
- Basic control enclosure to interconnect wiring from photo eyes and divert solenoid and conveyor on/off/E-stop



Side View  
Conveyor Scale



End View  
Conveyor Scale

Due to the variety of configurations, please consult a sales engineer to discuss application requirements and for complete specifications and price quotations.

Field installation available at pre-determined rates.

Questionnaire available at [www.ricelake.com/motoweigh](http://www.ricelake.com/motoweigh)

Example Conveyor System Sizes and Configurations					
Configuration	Scale Width	Scale Length	Capacity	PPM	Material
Scale Conveyor Only	6	12	10, 20	Min Length: 3 in Max Length (40ppm): 7 in Max Length (75ppm): 3 in	AL, Ind Welded
					SST, Ind Welded
					SST, Food Grade Welded
	6	18	10, 20	Min Length: 3 in Max Length (40ppm): 11.5 in Max Length (80ppm): 5 in	AL, Ind Welded
					SST, Ind Welded
					SST, Food Grade Welded
	6	24	10, 20	Min Length: 3 in Max Length (40ppm): 15.5 in Max Length (80ppm): 7.5 in	AL, Ind Welded
					SST, Ind Welded
					SST, Food Grade Welded
Checkweigher with Linear Thrust Reject Device (Includes: Infeed, scale, and outfeed conveyors. All conveyors same length.)	6	12	10, 20	Min Length: 3 in Max Length (40ppm): 7 in Max Length (75ppm): 3 in	AL, Ind Welded
					SST, Ind Welded
					SST, Food Grade Welded
	6	18	10, 20	Min Length: 3 in Max Length (40ppm): 11.5 in Max Length (80ppm): 5 in	AL, Ind Welded
					SST, Ind Welded
					SST, Food Grade Welded
	6	24	10, 20	Min Length: 3 in Max Length (40ppm): 15.5 in Max Length (80ppm): 7.5 in	AL, Ind Welded
					SST, Ind Welded
					SST, Food Grade Welded
Scale Conveyor Only	12	18	10, 20, 40	Min Length: 3 in (6 in@40 lb) Max Length (40ppm): 11.5 in Max Length (80ppm): 5 in	AL, Ind Welded
					SST, Ind Welded
					SST, Food Grade Welded
	12	24	10, 20, 40	Min Length: 3 in (6 in@40 lb) Max Length (40ppm): 15.5 in Max Length (80ppm): 7.5 in	AL, Ind Welded
					SST, Ind Welded
					SST, Food Grade Welded
	12	30	10, 20, 40	Min Length: 3 in (6 in@40 lb) Max Length (40ppm): 20 in Max Length (80ppm): 10 in	AL, Ind Welded
					SST, Ind Welded
					SST, Food Grade Welded
	12	36	10, 20, 40	Min Length: 3 in (6 in@40 lb) Max Length (35ppm): 25.5 in Max Length (70ppm): 15.5 in	AL, Ind Welded
					SST, Ind Welded
					SST, Food Grade Welded
Checkweigher with Linear Thrust Reject Device (Includes: Infeed, scale, and outfeed conveyors. All conveyors same length.)	12	18	10, 20, 40	Min Length: 3 in (6 in@40 lb) Max Length (40ppm): 11.5 in Max Length (80ppm): 5 in	AL, Ind Welded
					SST, Ind Welded
					SST, Food Grade Welded
	12	24	10, 20, 40	Min Length: 3 in (6 in@40 lb) Max Length (40ppm): 15.5 in Max Length (80ppm): 7.5 in	AL, Ind Welded
					SST, Ind Welded
					SST, Food Grade Welded
	12	30	10, 20, 40	Min Length: 3 in (6 in@40 lb) Max Length (40ppm): 20 in Max Length (80ppm): 10 in	AL, Ind Welded
					SST, Ind Welded
					SST, Food Grade Welded
	12	36	10, 20, 40	Min Length: 3 in (6 in@40 lb) Max Length (35ppm): 25.5 in Max Length (70ppm): 15.5 in	AL, Ind Welded
					SST, Ind Welded
					SST, Food Grade Welded

IN-MOTION WEIGHING

# MotoWeigh® IMW

In-Motion Conveyor Scale and Checkweigher

Example Conveyor System Sizes and Configurations

Configuration	Scale Width	Scale Length	Capacity	PPM	Material
Scale Conveyor Only	18	24	20, 40, 100	Min Length: 6 in (3 in@20 lb) Max Length (40ppm): 15.5 in Max Length (80ppm): 7.5 in	AL, Ind Welded
					SST, Ind Welded
					SST, Food Grade Welded
	18	30	20, 40, 100	Min Length: 6 in (3 in@20 lb) Max Length (40ppm): 20 in Max Length (80ppm): 10 in	AL, Ind Welded
					SST, Ind Welded
					SST, Food Grade Welded
	18	36	20, 40, 100	Min Length: 6 in (3 in@20 lb) Max Length (35ppm): 25.5 in Max Length (70ppm): 15.5 in	AL, Ind Welded
					SST, Ind Welded
					SST, Food Grade Welded
	18	42	20, 40, 100	Min Length: 6 in (3 in@20 lb) Max Length (30ppm): 32 in Max Length (60ppm): 22 in	AL, Ind Welded
					SST, Ind Welded
					SST, Food Grade Welded
	18	48	20, 40, 100	Min Length: 6 in (3 in@20 lb) Max Length (30ppm): 36.5 in Max of 54ppm	AL, Ind Welded
					SST, Ind Welded
					SST, Food Grade Welded
Checkweigher with Linear Thrust Reject Device (Includes: Infeed, scale, and outfeed conveyors. All conveyors same length.)	18	24	20, 40, 100	Min Length: 6 in (3 in@20 lb) Max Length (40ppm): 15.5 in Max Length (80ppm): 7.5 in	AL, Ind Welded
					SST, Ind Welded
					SST, Food Grade Welded
	18	30	20, 40, 100	Min Length: 6 in (3 in@20 lb) Max Length (40ppm): 20 in Max Length (80ppm): 10 in	AL, Ind Welded
					SST, Ind Welded
					SST, Food Grade Welded
	18	36	20, 40, 100	Min Length: 6 in (3 in@20 lb) Max Length (35ppm): 25.5 in Max Length (70ppm): 15.5 in	AL, Ind Welded
					SST, Ind Welded
					SST, Food Grade Welded
	18	42	20, 40, 100	Min Length: 6 in (3 in@20 lb) Max Length (30ppm): 32 in Max Length (60ppm): 22 in	AL, Ind Welded
					SST, Ind Welded
					SST, Food Grade Welded
	18	48	20, 40, 100	Min Length: 6 in (3 in@20 lb) Max Length (30ppm): 36.5 in Max of 54ppm	AL, Ind Welded
					SST, Ind Welded
					SST, Food Grade Welded
Scale Conveyor Only	24	30	40, 100	Min Length: 6 in Max Length (40ppm): 20 in Max Length (80ppm): 10 in	AL, Ind Welded
					SST, Ind Welded
					SST, Food Grade Welded
	24	36	40, 100	Min Length: 6 in Max Length (35ppm): 25.5 in Max Length (70ppm): 15.5 in	AL, Ind Welded
					SST, Ind Welded
					SST, Food Grade Welded
	24	42	40, 100	Min Length: 6 in Max Length (30ppm): 32 in Max Length (60ppm): 22 in	AL, Ind Welded
					SST, Ind Welded
					SST, Food Grade Welded
	24	48	40, 100	Min Length: 6 in Max Length (30ppm): 36.5 in Max of 54ppm	AL, Ind Welded
					SST, Ind Welded
					SST, Food Grade Welded
	24	54	40, 100	Min Length: 6 in Max Length (30ppm): 41.5 in Max of 48ppm	AL, Ind Welded
					SST, Ind Welded
					SST, Food Grade Welded
24	60	40, 100	Min Length: 6 in Max Length (30ppm): 46 in Max of 44ppm	AL, Ind Welded	
				SST, Ind Welded	
				SST, Food Grade Welded	

IN-MOTION WEIGHING

Example Conveyor System Sizes and Configurations						
Configuration	Scale Width	Scale Length	Capacity	PPM	Material	
Checkweigher with Linear Thrust Reject Device (Includes: Infeed, scale, and outfeed conveyors. All conveyors same length.)	24	30	40, 100	Min Length: 6 in Max Length (40ppm): 20 in Max Length (80ppm): 10 in	AL, Ind Welded	
					SST, Ind Welded	
					SST, Food Grade Welded	
	24	36	40, 100	Min Length: 6 in Max Length (35ppm): 25.5 in Max Length (70ppm): 15.5 in	AL, Ind Welded	
					SST, Ind Welded	
					SST, Food Grade Welded	
	24	42	40, 100	Min Length: 6 in Max Length (30ppm): 32 in Max Length (60ppm): 22 in	AL, Ind Welded	
					SST, Ind Welded	
					SST, Food Grade Welded	
	24	48	40, 100	Min Length: 6 in Max Length (30ppm): 36.5 in Max of 54ppm	AL, Ind Welded	
					SST, Ind Welded	
					SST, Food Grade Welded	
	24	54	40, 100	Min Length: 6 in Max Length (30ppm): 41.5 in Max of 48ppm	AL, Ind Welded	
					SST, Ind Welded	
					SST, Food Grade Welded	
	24	60	40, 100	Min Length: 6 in Max Length (30ppm): 46 in Max of 44ppm	AL, Ind Welded	
					SST, Ind Welded	
					SST, Food Grade Welded	
Scale Conveyor Only	30	36	100, 200	Min Length: 6 in Max Length (35ppm): 25.5 in Max Length (70ppm): 15.5 in	AL, Ind Welded	
					SST, Ind Welded	
					SST, Food Grade Welded	
	30	42	100, 200	Min Length: 6 in Max Length (30ppm): 32 in Max Length (60ppm): 22 in	AL, Ind Welded	
					SST, Ind Welded	
					SST, Food Grade Welded	
	30	48	100, 200	Min Length: 6 in Max Length (30ppm): 36.5 in Max of 54ppm	AL, Ind Welded	
					SST, Ind Welded	
					SST, Food Grade Welded	
	30	54	100, 200	Min Length: 6 in Max Length (30ppm): 41.5 in Max of 48ppm	AL, Ind Welded	
					SST, Ind Welded	
					SST, Food Grade Welded	
	30	60	100, 200	Min Length: 6 in Max Length (30ppm): 46 in Max of 44ppm	AL, Ind Welded	
					SST, Ind Welded	
					SST, Food Grade Welded	
	Checkweigher with Linear Thrust Reject Device (Includes: Infeed, scale, and outfeed conveyors. All conveyors same length.)	30	36	100, 200	Min Length: 6 in Max Length (35ppm): 25.5 in Max Length (70ppm): 15.5 in	AL, Ind Welded
						SST, Ind Welded
						SST, Food Grade Welded
30		42	100, 200	Min Length: 6 in Max Length (30ppm): 32 in Max Length (60ppm): 22 in	AL, Ind Welded	
					SST, Ind Welded	
					SST, Food Grade Welded	
30		48	100, 200	Min Length: 6 in Max Length (30ppm): 36.5 in Max of 54ppm	AL, Ind Welded	
					SST, Ind Welded	
					SST, Food Grade Welded	
30		54	100, 200	Min Length: 6 in Max Length (30ppm): 41.5 in Max of 48ppm	AL, Ind Welded	
					SST, Ind Welded	
					SST, Food Grade Welded	
30		60	100, 200	Min Length: 6 in Max Length (30ppm): 46 in Max of 44ppm	AL, Ind Welded	
					SST, Ind Welded	
					SST, Food Grade Welded	

IN-MOTION WEIGHING

# MotoWeigh® IMW

In-Motion Conveyor Scale and Checkweigher

## Example Conveyor System Sizes and Configurations

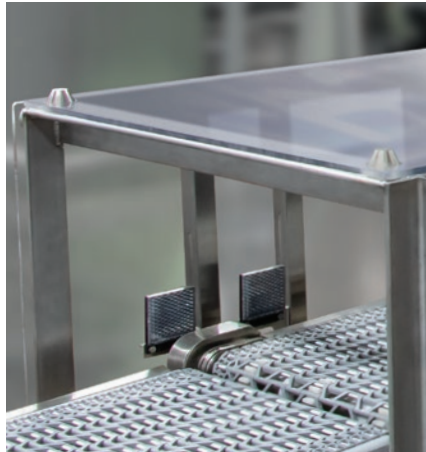
Configuration	Scale Width	Scale Length	Capacity	PPM	Material
Scale Conveyor Only	36	42	100, 200	Min Length: 6 in Max Length (30ppm): 32 in Max Length (60ppm): 22 in	AL, Ind Welded
					SST, Ind Welded
					SST, Food Grade Welded
	36	48	100, 200	Min Length: 6 in Max Length (30ppm): 36.5 in Max of 54ppm	AL, Ind Welded
					SST, Ind Welded
					SST, Food Grade Welded
	36	54	100, 200	Min Length: 6 in Max Length (30ppm): 41.5 in Max of 48ppm	AL, Ind Welded
					SST, Ind Welded
	36	60	100, 200	Min Length: 6 in Max Length (30ppm): 46 in Max of 44ppm	AL, Ind Welded
					SST, Ind Welded
					SST, Food Grade Welded
	Checkweigher with Linear Thrust Reject Device (Includes: Infeed, scale, and outfeed conveyors. All conveyors same length.)	36	42	100, 200	Min Length: 6 in Max Length (30ppm): 32 in Max Length (60ppm): 22 in
SST, Ind Welded					
SST, Food Grade Welded					
36		48	100, 200	Min Length: 6 in Max Length (30ppm): 36.5 in Max of 54ppm	AL, Ind Welded
					SST, Ind Welded
					SST, Food Grade Welded
36		54	100, 200	Min Length: 6 in Max Length (30ppm): 41.5 in Max of 48ppm	AL, Ind Welded
					SST, Ind Welded
36		60	100, 200	Min Length: 6 in Max Length (30ppm): 46 in Max of 44ppm	AL, Ind Welded
					SST, Ind Welded
					SST, Food Grade Welded

Additional configurations, sizes, and capacities are available upon request

IN-MOTION WEIGHING



Diverter



Draftshield



Stack light accessory



Guide rails