



High-visibility LED Display



Swivel Hook



Rechargeable Battery Pack

Caston III Plus

Crane Scale

The CASTON III PLUS is ideal for heavy duty use in harsh industrial environments.

The CASTON III PLUS is a full featured, rugged industrial crane scale with standard features that include a watertight enclosure, 1.5" high intensity LED display, simple, easy to use rechargeable battery pack, wireless remote control, swivel hook, and portable hand held indicator



Caston III Plus ▶



◀ Caston III Plus 60K



www.cas-usa.com

Caston III Plus | Crane Scale

Rugged

The Caston III Plus is ideal for harsh, industrial applications.

Sun Visor

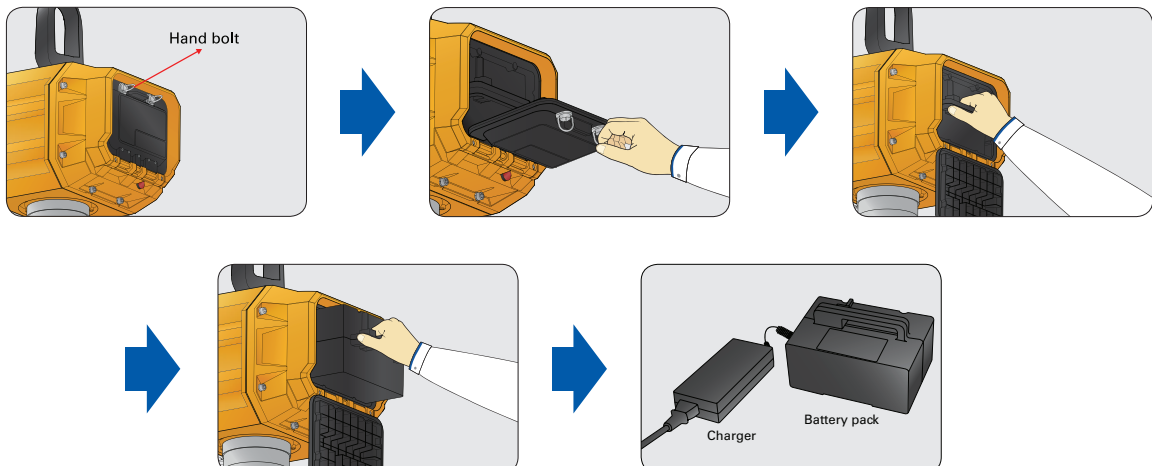
A sun visor guarantees readability even in bright sun light.

Remote Control

Every Caston III Plus includes an infrared wireless remote control providing power on/off, tare, hold, clear, and sum functions.

Easy to Change Battery Pack

Easily access the rechargeable battery pack by hand for recharging and re-installing.



TWN Handheld Indicator

The TWN Handheld Portable Indicator is included with all *Caston III Plus BT* Crane Scales. Already have a *Caston III Plus* Crane Scale and want Bluetooth connectivity? No problem. Simply install the optional Bluetooth Field Retrofit Kit and the TWN Portable Handheld Indicator for a fully operational Bluetooth crane scale.



Easy to Read LED Display

The LED display's downward tilt angle and large 1.5" characters provide the user with a clear and easy to read weight value.

Swivel Hook

The swivel hook is standard on all capacities, offering 360 degree movement while also insuring safety, accuracy, and repeatability.



Caston III Plus | Crane Scale



TWN Portable Handheld Indicator

Features

- Light weight and portable
- Easy to see - simple to operate
- Wireless Connectivity
- Increased Functionality
- Built-in Rechargeable Battery
- Sun Visor



TWN Handheld Indicator



The CAS TWN HAND HELD INDICATOR utilizes a high contrast, 320 x 240, TFT LCD display. The CAS TWN handheld indicator also includes a screen visor and an alphanumeric and function style keypad housed in a light weight protective enclosure.

Portable & Durable

This portable handheld indicator is both durable and functional. The TWN's design incorporates a built-in rechargeable battery and offers Bluetooth wireless communication capabilities that enable transmissions in excess of 300 feet /100 meters.

Data Management

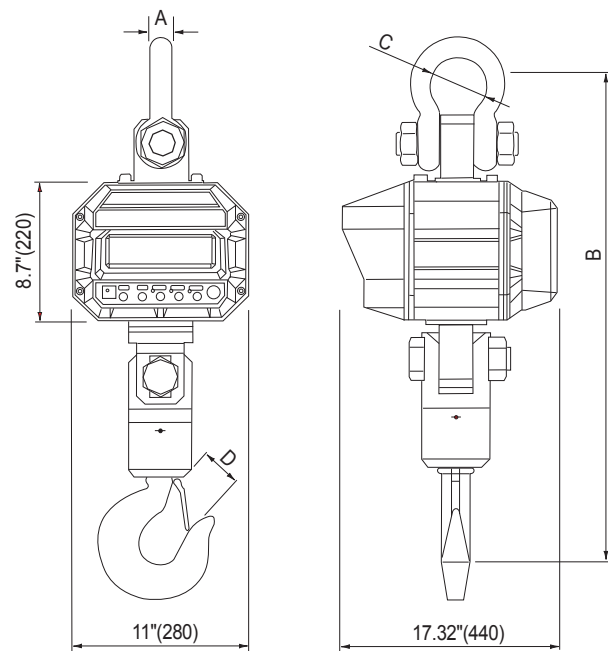
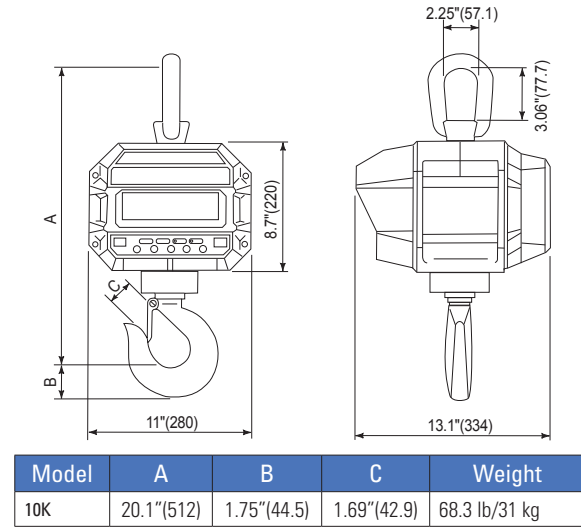
For data management needs, the TWN is supplied with enough on-board memory for 100 items and 5,000 transactions (including time, date, and gross weight). A wired printer or bluetooth mobile printer can be used for printing needs or simply utilize the USB to PC connection to upload/download weighing data including item number, item name, and header text to a connected PC. Item management and data back up capabilities available with CAS TW-Works software.

Specifications	
Communication Type	Bluetooth
Communication Rate	9,600 bps
Communication Distance	Max. 100m
Display	320 x 240 TFT LCD
Battery Time	Approx 24 hours (Continuous Usage)
Battery Charging Time	Approx 5-6 hrs
Power	DC 3.6V 4,400mA rechargeable battery DC 4.2V adapter
Operating Temp	-10°C ~ +40°C
Interface	USB : PC connection RS-232C : Mobile printer connection
Dimensions	4.1 (W) x 8 (H) x 2.9 (D) - Inches 104.7 (W) x 204 (H) x 74.3 (D) - MM
Product Weight	1.1 lbs/0.5 kg

Caston III Plus | Crane Scale



Models Caston III & Caston III BT	10K	20K	30K
	10,000 X 2 lbs	20,000 X 5 lbs	30,000 X 10 lbs
	5,000 x 2 kg	10,000 x 5 kg	15,000 x 10 kg
	40K	60K	100K
	40,000 X 10 lbs	60,000 X 20 lbs	100,000 X 20 lbs
20,000 x 10 kg	30,000 x 10 kg	50,000 x 20 kg	
Accuracy	Plus or minus 0.1% of applied load		
Maximum Tare	Full Tare		
Overload	Safety: 150% of rated capacity Ultimate: 300% of rated capacity		
Housing	Alodined cast aluminum Double O-ring gasket NEMA 4 IP 65		
Hook, Eye, Shackles	Crosby or equivalent		
Display Type	LED / 6 Digit (1.5 inch)		
Frequency (BT)	2.4 Ghz		
Remote Distance (BT)	Up to 350 ft / 106.7 m		
Channels (BT)	Up to 79 separate channels		
Calibration	Manual		
Operating Power	DC 12V		
Operating Time	14 - 24 hours		
Power Source	AC 120V, 50/60 Hz		
Display Designators	Zero, Tare, Hold, Batt		
Power Consumption	1.2 W		
Operating Temp	-10°C ~ 40°C / 14°F ~ 104°F		
Warranty	2 Years		



OPTIONS

- Bluetooth communication
- TWN Handheld Portable Indicator
- TW-Works Software
- Beacon Series Remote Display
Consult factory



► Scale Cradle

Included with all 60K and 100K capacity Caston Crane scales



99 Murray Hill Parkway
East Rutherford, NJ 07073
TEL: (201) 933-9002
FAX: (201) 933-9025
<http://www.cas-usa.com>

Specifications are subject to change for improvement without prior notice.

